

Technical kick-off meeting

Spatial Data Infrastructure model of green-blue actions for
Ecosystem-based Adaptation of Social Habitat in Argentina

First meeting

March 12th, 2026

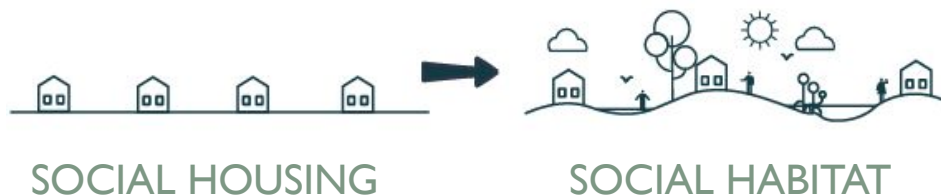
Overview of the project

Context

Social housing has historically been addressed through public investment and policies typically applying a **one-size-fits-all** formula, regardless of the local circumstances (territory's environmental, social and geographic specificities).

Challenge Change of Concept

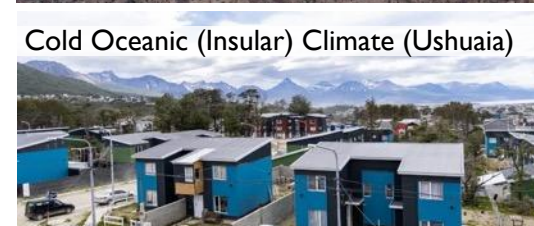
Transcend the generic, typology-based social housing model and shift towards a **habitat approach** responsive to local ecosystems and social conditions.



Temperate Pampas Climate (Ensenada, Bs.As.)



Arid Andean puna Climate (Jujuy)



Cold Oceanic (Insular) Climate (Ushuaia)



Warm Subtropical Climate: Upper Paraná Atlantic Forest (Misiones)



Overview of the project

Main objective

Development of a **Spatial Data Infrastructure (SDI) for green-blue actions within the framework of Ecosystem-based Adaptation** to support the development of an improved social habitat for vulnerable communities in Argentina.

Delivered through an **easy-to-use open-source map platform** available to all sectors of the communities, regardless of their level of training on the subject.

INTEGRATION OF THREE PILLARS

COMPREHENSIVENESS OF THE SOCIOECOLOGICAL SYSTEM

- General assessment, identification of **3 areas where the analysis will be carried out (focus sites selected)**.
- Identification of social challenges and assessment of local adaptation capacities in the 3 focus sites.
- Integration of climate variables in a **Climate Impact chain for the 3 focus sites**.

DEVELOPMENT OF A TECHNICAL DATABASE

- Assessment of green and blue infrastructure measures for EbA and development of a **catalogue**.
- Analysis of the advantages and benefits of each measure in addressing the identified risks in the 3 focus sites.

INTEGRATION IN AN SDI PLATFORM

- Integration of the assessment and Climate Impact chain with the database of green-blue infrastructure measures for EbA.
- Development of an **open-source map platform for the 3 focus sites**.

Overview of the project

Milestones

Milestone I

Development of
baseline report

Month 0 - START

Month 6 - Year I

ACTIVITIES

- Assessment (social challenges, policies, social housing programs, occupation patterns)
- Definition of selection criteria.
- Identification of 3 focus sites in different areas.exposed to different climate risks

DELIVERABLES

- A.1** | Baseline Report part I
- A.2** | Baseline Report part II



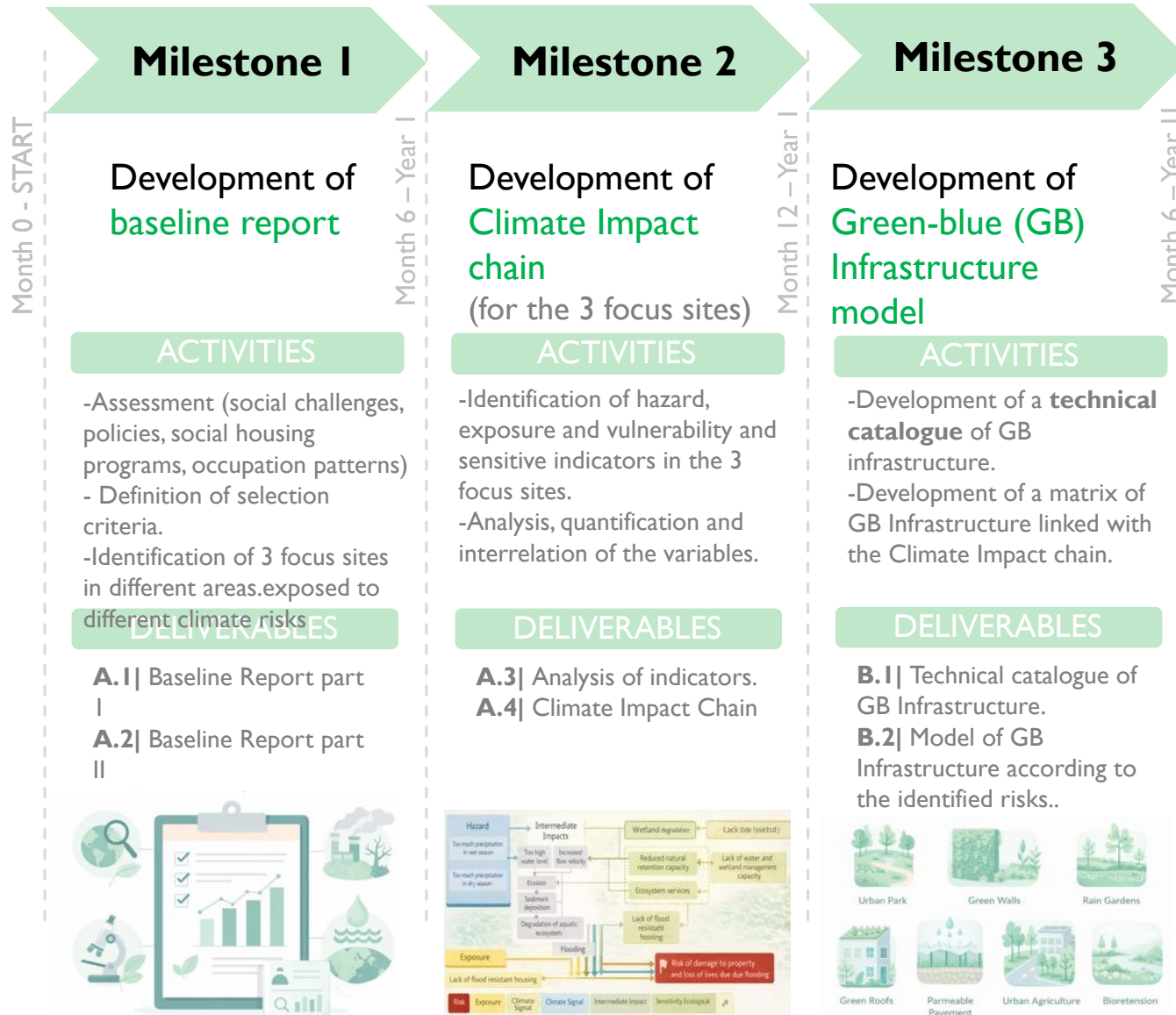
Overview of the project

Milestones



Overview of the project

Milestones



Overview of the project

Milestones

Month 0 - START

Milestone 1

Development of
baseline report

ACTIVITIES

- Assessment (social challenges, policies, social housing programs, occupation patterns)
- Definition of selection criteria.
- Identification of 3 focus sites in different areas.exposed to different climate risks

DELIVERABLES

- A.1** | Baseline Report part I
- A.2** | Baseline Report part II



Month 6 - Year I

Milestone 2

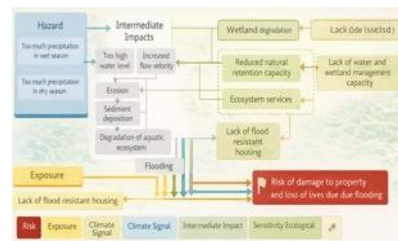
Development of
Climate Impact
chain
(for the 3 focus sites)

ACTIVITIES

- Identification of hazard, exposure and vulnerability and sensitive indicators in the 3 focus sites.
- Analysis, quantification and interrelation of the variables.

DELIVERABLES

- A.3** | Analysis of indicators.
- A.4** | Climate Impact Chain



Month 12 - Year I

Milestone 3

Development of
Green-blue (GB)
Infrastructure
model

ACTIVITIES

- Development of a **technical catalogue** of GB infrastructure.
- Development of a matrix of GB Infrastructure linked with the Climate Impact chain.

DELIVERABLES

- B.1** | Technical catalogue of GB Infrastructure.
- B.2** | Model of GB Infrastructure according to the identified risks..



Month 6 - Year II

Milestone 4

Development of
Spatial Data
Infrastructure (SDI)
model for EbA

ACTIVITIES

- Development of an SDI platform, including the combination of the results assessed in the matrix of GBI.online

DELIVERABLES

- B.3** | Spatial Data Infrastructure platform for EbA accessible from a web platform, to visualise the best solution for each focus site



Overview of the project

Milestones

Month 0 - START

Milestone 1

Development of
baseline report

ACTIVITIES

- Assessment (social challenges, policies, social housing programs, occupation patterns)
- Definition of selection criteria.
- Identification of 3 focus sites in different areas.exposed to different climate risks

DELIVERABLES

- A.1** | Baseline Report part I
- A.2** | Baseline Report part II



Month 6 – Year I

Milestone 2

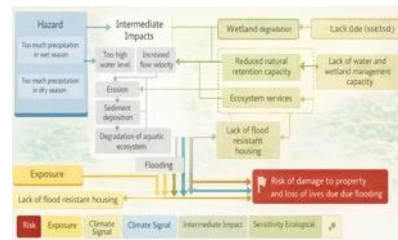
Development of
Climate Impact chain
(for the 3 focus sites)

ACTIVITIES

- Identification of hazard, exposure and vulnerability and sensitive indicators in the 3 focus sites.
- Analysis, quantification and interrelation of the variables.

DELIVERABLES

- A.3** | Analysis of indicators.
- A.4** | Climate Impact Chain



Month 12 – Year I

Milestone 3

Development of
Green-blue (GB) Infrastructure model

ACTIVITIES

- Development of a **technical catalogue** of GB infrastructure.
- Development of a matrix of GB Infrastructure linked with the Climate Impact chain.

DELIVERABLES

- B.1** | Technical catalogue of GB Infrastructure.
- B.2** | Model of GB Infrastructure according to the identified risks..



Month 6 – Year II

Milestone 4

Development of
Spatial Data Infrastructure (SDI) model for EbA

ACTIVITIES

- Development of an SDI platform, including the combination of the results assessed in the matrix of GBI.online

DELIVERABLES

- B.3** | Spatial Data Infrastructure platform for EbA accessible from a web platform, to visualise the best solution for each focus site.



Month 12 – Year II

Milestone 5

Dissemination of
the results

ACTIVITIES

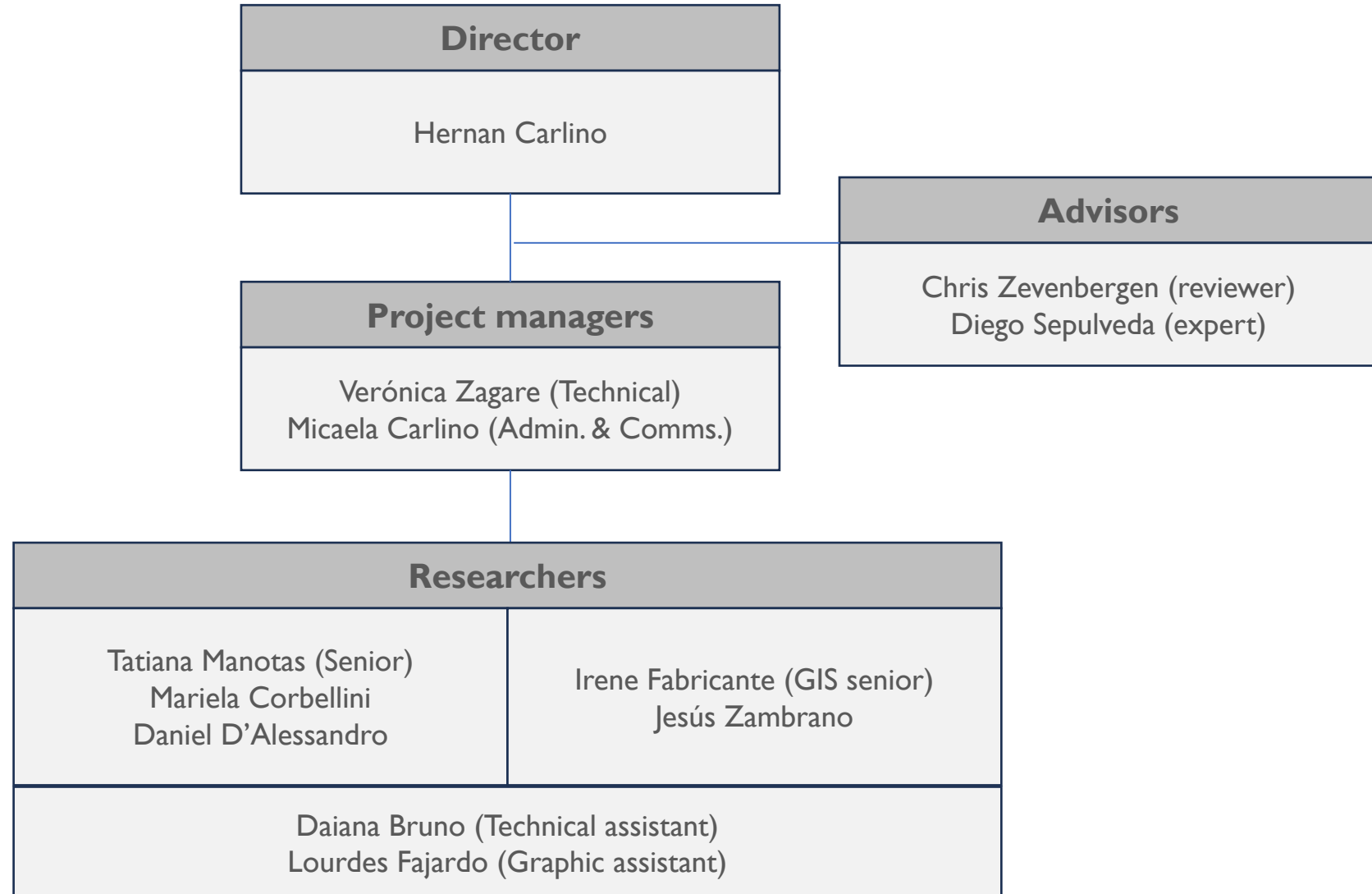
- Dissemination of the results through the development of a collaborative activity.

DELIVERABLES

- B.4** | Online workshop with stakeholders.
- B.5** | Publication of final report.



Team and organization



Changes due to time

Platform Development Update

Due to recent technological advances in Geographic Information Systems (GIS), the project implementation approach has been updated:

- Instead of **outsourcing web hosting for publishing and maintaining** maps online, the platform will be developed directly within the **ArcGIS Online ecosystem**, using tools such as Experience Builder, Suitability Modeller, and other integrated applications. The system will operate entirely online and will only require an active ArcGIS Online subscription, which will be covered by the project.

- No changes are expected in the final deliverables or technical outputs.
- There is no budgetary impact, as the cost savings from not contracting for hosting services are offset by the subscription costs.

Any mitigation measures to be taken on the project ESMS?

- The proposed project has been screened in accordance with EbA Fund's Environmental and Social Management System (ESMS) procedures.
- The project activities are expected to result in minimal or no adverse environmental and social impacts. The nature and scale of the activities as we are proposing to develop a Spatial Data Infrastructure-model (SDI) of green-blue actions for EbA for the development of social habitat in Argentina.
- As such, it does not involve resource use, GHG emissions, waste generation, land acquisition, physical or economic displacement, or create impacts on sensitive habitats or vulnerable communities..

Thank you

mc@itdt.edu